

SN Comprehensive Clinical Medicine

ISSN: 2523-8973 (Online)

Table of Contents

Description	2
Aims and Scope	2
Online Manuscript Submission	2
Submission Process Overview	3
Article Types	4
Instructions for Authors	4
Title Page	4
Text	5
Acknowledgments	5
Declarations:	5
References	6
Tables	6
Artwork and Illustrations Guidelines	7
Electronic Supplementary Material	10
Special Requirements for Submission Types	12
Original Article	12
Brief Communication	12
Case Report	13
Commentary	13
Review Article	14
Criteria for Authorship	14
Disclosure of Potential Conflicts of Interest	15
Ethical Responsibilities of Authors	15
Compliance with Ethical Standards	17
Research Involving Human Participants and/or Animals	17
After Acceptance	19
Open Choice	19
English Language Editing	20

Description

SN Comprehensive Clinical Medicine offers:

- No color or page charges, free submission, and is free to access for the first two years of publication.
- A unified forum for the international medical community to connect research, theory and practice.
- Peer-review, under the expert guidance of a global, established Editorial Board.
- Fostering of sound science discovery to advance discussion across all disciplines of clinical medicine.
- Rapid publication of articles with high visibility.

Aims and Scope

SN Comprehensive Clinical Medicine is a broadly based, peer reviewed journal that publishes original research in all disciplines of clinical medicine and their subspecialties. The journal aims to be a global forum for the discussion of all aspects of Imaging, Surgical and Medical studies related to diagnosis, treatment and management. In addition, the journal serves the international medical community for the dissemination of information connecting research, theory and practice in these fields.

SN Comprehensive Clinical Medicine welcomes submissions from a wide range of medical fields from basic and translational research to clinical studies, methodologies, health care delivery reports and curriculum development. The journal publishes papers in the following categories: Original Articles, Brief Communications, Case Reports, Commentaries and Reviews. All papers are evaluated on the basis of scientific content. Submissions are first screened for research and publication ethics prior to peer review. Reviewers are asked to focus on the validity of the data and conclusions presented. The journal reviews each submission from a 'sound science' perspective.

In addition to direct submissions, **SN Comprehensive Clinical Medicine** welcomes papers that have been referred from Springer Nature's prestigious clinical medicine journal portfolio.

Online Manuscript Submission

Manuscripts must be submitted online through the Editorial Manager® system that manages the entire workflow of all manuscripts. Careful attention to the submission process is critical.

Editorial Manager® supports a wide range of submission file formats. For manuscripts, Word is preferred and will make submission easier. WordPerfect, RTF, TXT, and LaTeX are also acceptable. For figures, use TIFF, GIF, JPEG, EPS, PPT, or Postscript. **PDF is not an acceptable file format.**

For Questions related to manuscript submission or preparation, please contact the Editorial Office of **SN Comprehensive Clinical Medicine**: mariafe.delaserna@springernature.com

Manuscript Submission

Submission of a manuscript implies: that the work described has not been published before; that it is not under consideration for publication anywhere else; that its publication has been approved by all co-authors, if any, as well as by the responsible authorities – tacitly or explicitly – at the institute where the work has been carried out. The publisher will not be held legally responsible should there be any claims for compensation.

Permissions

Authors wishing to include figures, tables, or text passages that have already been published elsewhere are required to obtain permission from the copyright owner(s) for both the print and online format and to include evidence that such permission has been granted when submitting their papers. Any material received without such evidence will be assumed to originate from the authors.

Submission Process Overview

The following separate files are needed for the submission process:

1. Cover letter that
 - a. Identifies the type of article and confirms that it complies with all Instructions for Authors
 - b. Lists suggested/avoided reviewers (optional)
2. Manuscript file that includes the title page, details page and abstract (Word format preferred)
3. Separate files for each table and figure
4. Comments to the editorial staff (if any)
5. Supplemental Files (optional)
6. ICJME Conflict of Interest (COI) form for each author found [here](#)
7. Checklists should be completed as appropriate, and **included at the end of the manuscript**:
 - Case Reports – [CARE Guidelines](#)
 - Observational studies – [STROBE](#)
 - Randomized trials – [CONSORT](#)
 - Systematic review, meta-analysis – [PRISMA](#)
 - Diagnostic accuracy – [STARD](#)
 - Quality improvement studies – [SQUIRE](#)
 - Animal research – [ARRIVE](#)
 - Multivariable prediction model for individual prognosis or diagnosis – [TRIPOD](#)
 More information about checklists can be found at [Equator Network](#)

To submit: Go to <https://www.editorialmanager.com/sncm/default.aspx> and Log in as an author

You will be asked to complete the following steps:

1. Begin submission with selection of an article type
2. Upload your manuscript, preferably as a Word file.
3. Select classifications (used to match the manuscript with appropriate reviewers)
4. Provide any additional comments, if desired
5. Enter the full title of the article
6. Enter the abstract
7. Enter authors' information for each author (title, full name, e-mail address, institution and country)
8. Declarations:

All manuscripts must contain the following sections under the heading '**Declarations**', to be placed before 'References'. If any of the sections are not relevant to your manuscript, please include the heading and write 'Not applicable' for that section.

 - i. **Funding** (information that explains whether and by whom the research was supported)
 - ii. **Conflicts of interest/Competing interests** (include appropriate disclosures)
 - iii. **Ethics approval** (include appropriate approvals or waivers)
 - iv. **Consent to participate** (include appropriate statements)
 - v. **Consent for publication** (include appropriate statements)

- vi. **Availability of data and material** (data transparency)
 - vii. **Code availability** (software application or custom code)
 - viii. **Authors' contributions**
9. Create pdf for review
 10. Correct or approve the pdf for submission

Article Types

- **Original Articles**
Reports of unpublished articles of data on medical research.
- **Brief Communication**
Original research with a maximum of 3 figures and 2500 words.
- **Case Report**
A brief report of a small group of patients (1 to 3) or a family.
- **Commentary**
Including viewpoints, letters to the editor, editorials and ethical matters.
- **Review**
Narrative and meta-analyses review articles that discuss and summarize relevant evidences related to the bases of diseases, diagnoses and therapies.

Instructions for Authors

General requirements for all submissions:

Title Page

Title

The title page should include:

- A concise and informative title
- The name(s) of the author(s)
- The affiliation(s) and address(es) of the author(s)
- The e-mail address, and telephone number(s) of the corresponding author

Abstract

Abstracts are only to be included for Original Articles, Brief Communications, Case Reports and Reviews. Structured abstracts for Original Articles submissions should be of 150 to 250 words, and should be divided into the following sections:

- Background/Objective
- Methods
- Results
- Conclusions

Abstracts for other types of articles do not require those headings.

Keywords

Please provide 4 to 6 keywords which can be used for indexing purposes.

Text

The text should be written in standard scientific English and carefully proofread. **Non-standard abbreviations should be avoided wherever possible**; if used they should be defined on first use and be dissimilar from other abbreviations.

Text Formatting

- Use a normal, plain font (e.g., 11-point Times Roman) for the text.
- Use italics for emphasis.
- Use the automatic page numbering function to number the pages.
- Do not use field functions.
- Use tab stops or other commands for indents, not the space bar.
- Use the table function, not spreadsheets, to make tables.
- Use the equation editor or MathType for equations.
- Save your file in docx format (Word 2007 or higher) or doc format (older Word versions).

Footnotes

Footnotes can be used to give additional information, which may include the citation of a reference included in the reference list. They should not consist solely of a reference citation, and they should never include the bibliographic details of a reference. They should also not contain any figures or tables.

Footnotes to the text are numbered consecutively; those to tables should be indicated by superscript lower-case letters (or asterisks for significance values and other statistical data). Footnotes to the title or the authors of the article are not given reference symbols. Always use footnotes instead of endnotes.

Acknowledgments

Include details about support for the work including Funder, Award Number, and Grant Recipient. The names of funding organizations should be written in full. Acknowledgments for people can be also added in the manuscript.

Declarations:

All manuscripts must contain the following sections under the heading '**Declarations**', to be placed before 'References'. If any of the sections are not relevant to your manuscript, please include the heading and write 'Not applicable' for that section.

- i. **Funding** (information that explains whether and by whom the research was supported)
- ii. **Conflicts of interest/Competing interests** (include appropriate disclosures)
A statement specifying whether or not the authors have a conflict of interest should be included. Further details on [Disclosure of Potential Conflicts of Interest](#) can be found below.
- iii. **Ethics approval** (include appropriate approvals or waivers)
- iv. **Consent to participate** (include appropriate statements)
- v. **Consent for publication** (include appropriate statements)
- vi. **Availability of data and material** (data transparency)
- vii. **Code availability** (software application or custom code)
- viii. **Authors' contributions**
A statement specifying the contributions of every author should be added in the text. Further details on the [Criteria for Authorship](#) can be found below.

References

Citation

Reference citations in the text should be identified by numbers in square brackets. Some examples:

1. Negotiation research spans many disciplines [3].
2. This result was later contradicted by Becker and Seligman [5].
3. This effect has been widely studied [1-3, 7].

Reference list

The list of references should only include works that are cited in the text and that have been published or accepted for publication. Personal communications and unpublished works should only be mentioned in the text. Do not use footnotes or endnotes as a substitute for a reference list.

The entries in the list should be numbered consecutively.

- **Journal article**
Smith JJ. The world of science. *Am J Sci.* 1999;36:234–5.
- **Article by DOI**
Slifka MK, Whitton JL. Clinical implications of dysregulated cytokine production. *J Mol Med.* 2000; <https://doi.org/10.1007/s001090000086>
- **Book**
Blenkinsopp A, Paxton P. *Symptoms in the pharmacy: a guide to the management of common illness.* 3rd ed. Oxford: Blackwell Science; 1998.
- **Book chapter**
Wyllie AH, Kerr JFR, Currie AR. Cell death: the significance of apoptosis. In: Bourne GH, Danielli JF, Jeon KW, editors. *International review of cytology.* London: Academic; 1980. pp. 251–306.
- **Online document**
Doe J. Title of subordinate document. In: *The dictionary of substances and their effects.* Royal Society of Chemistry. 1999. [http://www.rsc.org/dose/title of subordinate document](http://www.rsc.org/dose/title%20of%20subordinate%20document). Accessed 15 Jan 1999.

Always use the standard abbreviation of a journal's name according to the ISSN List of Title Word Abbreviations, see [ISSN.org LTWA](https://www.issn.org/LTWA). If you are unsure, please use the full journal title.

For authors using EndNote, Springer provides an output style that supports the formatting of in-text citations and reference list, here: [EndNote style \(zip, 3 kB\)](#).

Tables

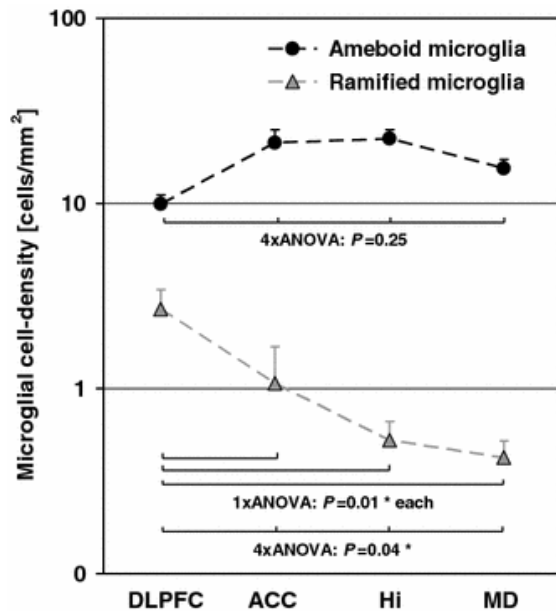
- All tables are to be numbered using Arabic numerals.
- Tables should always be cited in text in consecutive numerical order.
- For each table, please supply a table caption (title) explaining the components of the table.
- Identify any previously published material by giving the original source in the form of a reference at the end of the table caption.
- Footnotes to tables should be indicated by superscript lower-case letters (or asterisks for significance values and other statistical data) and included beneath the table body.

Artwork and Illustrations Guidelines

Electronic Figure Submission

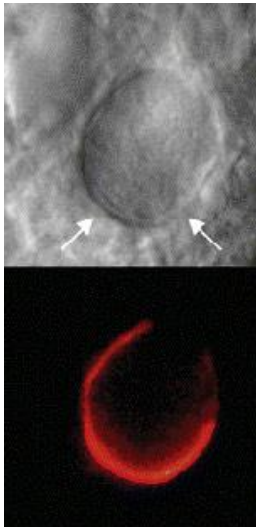
- Supply all figures electronically.
- Indicate what graphics program was used to create the artwork.
- For vector graphics, the preferred format is EPS; for halftones, please use TIFF format. MSOffice files are also acceptable.
- Vector graphics containing fonts must have the fonts embedded in the files.
- Name your figure files with "Fig" and the figure number, e.g., Fig1.eps.

Line Art



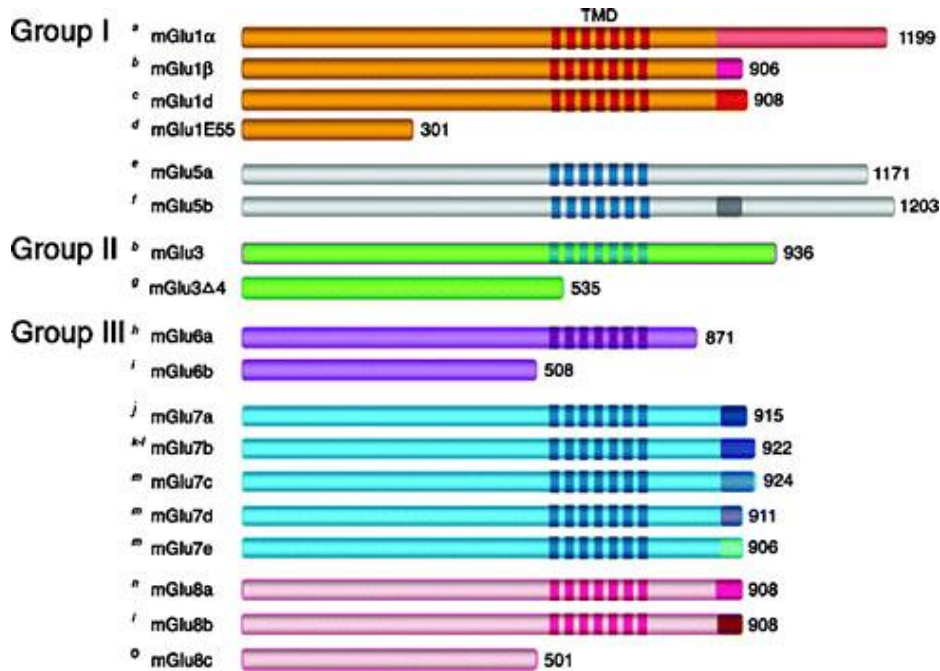
- Definition: Black and white graphic with no shading.
- Do not use faint lines and/or lettering and check that all lines and lettering within the figures are legible at final size.
- All lines should be at least 0.1 mm (0.3 pt) wide.
- Scanned line drawings and line drawings in bitmap format should have a minimum resolution of 1200 dpi.
- Vector graphics containing fonts must have the fonts embedded in the files.

Halftone Art



- Definition: Photographs, drawings, or paintings with fine shading, etc.
- If any magnification is used in the photographs, indicate this by using scale bars within the figures themselves.
- Halftones should have a minimum resolution of 300 dpi.

Combination Art



- Definition: a combination of halftone and line art, e.g., halftones containing line drawing, extensive lettering, color diagrams, etc.
- Combination artwork should have a minimum resolution of 600 dpi.

Color Art

- Color illustrations should be submitted as RGB (8 bits per channel).

Figure Lettering

- To add lettering, it is best to use Helvetica or Arial (sans serif fonts).
- Keep lettering consistently sized throughout your final-sized artwork, usually about 2–3 mm (8–12 pt).
- Variance of type size within an illustration should be minimal, e.g., do not use 8-pt type on an axis and 20-pt type for the axis label.
- Avoid effects such as shading, outline letters, etc.
- Do not include titles or captions within your illustrations.

Figure Numbering

- All figures are to be numbered using Arabic numerals.
- Figures should always be cited in text in consecutive numerical order.
- Figure parts should be denoted by lowercase letters (a, b, c, etc.).
- If an appendix appears in your article and it contains one or more figures, continue the consecutive numbering of the main text. Do not number the appendix figures "A1, A2, A3, etc."
- Figures in online appendices (Electronic Supplementary Material) should, however, be numbered separately.

Figure Captions

- Each figure should have a concise caption describing accurately what the figure depicts. Include the captions in the text file of the manuscript, not in the figure file.
- Figure captions begin with the term Fig. in bold type, followed by the figure number, also in bold type.
- No punctuation is to be included after the number, nor is any punctuation to be placed at the end of the caption.
- Identify all elements found in the figure in the figure caption; and use boxes, circles, etc., as coordinate points in graphs.
- Identify previously published material by giving the original source in the form of a reference citation at the end of the figure caption.

Figure Placement and Size

- Figures should be submitted separately from the text, if possible.

Permissions

If you include figures that have already been published elsewhere, you must obtain permission from the copyright owner(s). Please be aware that some publishers do not grant electronic rights for free and that Springer will not be able to refund any costs that may have occurred to receive these permissions. In such cases, material from other sources should be used.

Accessibility

In order to give people of all abilities and disabilities access to the content of your figures, please make sure that:

- All figures have descriptive captions (blind users could then use a text-to-speech software or a text-to-Braille hardware)
- Patterns are used instead of or in addition to colors for conveying information (colorblind users would then be able to distinguish the visual elements)
- Any figure lettering has a contrast ratio of at least 4.5:1

Electronic Supplementary Material

Springer accepts electronic multimedia files (animations, movies, audio, etc.) and other supplementary files to be published online along with an article or a book chapter. This feature can add dimension to the author's article, as certain information cannot be printed or is more convenient in electronic form.

Before submitting research datasets as electronic supplementary material, authors should read the journal's Research data policy. We encourage research data to be archived in data repositories wherever possible.

Submission

- Supply all supplementary material in standard file formats.
- Please include in each file the following information: article title, journal name, author names; affiliation and e-mail address of the corresponding author.
- To accommodate user downloads, please keep in mind that larger-sized files may require very long download times and that some users may experience other problems during downloading.

Audio, Video, and Animations

- Aspect ratio: 16:9 or 4:3
- Maximum file size: 25 GB
- Minimum video duration: 1 sec
- Supported file formats: .avi, .wmv, .mp4, .mov, .m2p, .mp2, .mpg, .mpeg, .flv, .mxfl, .mts, .m4v, .3gp

Text and Presentations

- Submit your material in PDF format; .doc or .ppt files are not suitable for long-term viability.
- A collection of figures may also be combined in a PDF file.

Spreadsheets

- Spreadsheets should be submitted as .csv or .xlsx files (MS Excel).

Specialized Formats

- Specialized format such as .pdb (chemical), .wrl (VRML), .nb (Mathematica notebook), and .tex can also be supplied.

Collecting Multiple Files

- It is possible to collect multiple files in a .zip or .gz file.

Numbering

- If supplying any supplementary material, the text must make specific mention of the material as a citation, similar to that of figures and tables.
- Refer to the supplementary files as "Online Resource", e.g., "... as shown in the animation (Online Resource 3)", "... additional data are given in Online Resource 4".
- Name the files consecutively, e.g. "ESM_3.mpg", "ESM_4.pdf".

Captions

- For each supplementary material, please supply a concise caption describing the content of the file.

Processing of supplementary files

- Electronic supplementary material will be published as received from the author without any conversion, editing, or reformatting.

Accessibility

In order to give people of all abilities and disabilities access to the content of your supplementary files, please make sure that

- The manuscript contains a descriptive caption for each supplementary material
- Video files do not contain anything that flashes more than three times per second (so that users prone to seizures caused by such effects are not put at risk)

Special Requirements for Submission Types

Original Article

- An Original Article should consist of a scholarly investigation on any aspect of clinical, translational or computational medicine that produces new knowledge.
- There are no specific limits to number of authors, word count, or tables/figures; still authors are expected to communicate their message succinctly.
- **Abstract:** Structured abstract, maximum of 250 words. The abstract should provide the context or background for the study and should state the study's purpose, basic procedures, main findings (include data values and their statistical and clinical significance, if appropriate, not just descriptive terms), and principal conclusions. It should emphasize new and important aspects of the study or observations, note important limitations, and not overinterpret findings. It should include the following sections: Background/Objective, Methods, Results, and Conclusions.
- **Body of Manuscript:** The text should be divided into the following sections: Introduction, Methods, Results, Discussion, and Conclusions.
 - **Introduction:** Provide a context or background for the study (that is, the nature of the problem and its significance). State the specific purpose or research objective of, or hypothesis tested by, the study or observation. Cite only directly pertinent references and do not include data or conclusions from the work being reported.
 - **Methods:** The guiding principle of the Methods section should be clarity about how and why a study was done in a particular way. Methods section should aim to be sufficiently detailed such that others with access to the data would be able to reproduce the results. It should include a statement indicating that the research was approved by an independent local, regional or national review body.
 - **Results:** Present your results in logical sequence in the text, tables, and figures, giving the main or most important findings first. Do not repeat all the data in the tables or figures in the text; emphasize or summarize only the most important observations. Provide data on all primary and secondary outcomes identified in the Methods section. Give numeric results not only as derivatives (e.g. percentages) but also as the absolute numbers from which the derivatives were calculated, and specify the statistical significance attached to them, if any.
 - **Discussion:** Begin the discussion by briefly summarizing the main findings and explore possible mechanisms or explanations for these findings. Emphasize the new and important aspects of your study and put your findings in the context of the totality of the relevant evidence. State the limitations of your study and explore the implications of your findings for future research and for clinical practice or policy.
 - **Conclusions:** Link the conclusions with the goals of the study but avoid unqualified statements and conclusions not adequately supported by the data.

Brief Communication

- Submissions should provide a high-quality original research presented in a short format.
- The articles should not be preliminary reports and should be of significant and broad interest to the readers of *SN Comprehensive Clinical Medicine*.
- Abstract: no headings required, 250 words maximum
- The text should be divided into the following sections: Introduction, Methods, Results, Discussion, and Conclusions. The sections Results and Discussion can be merged into a single section.
- Maximum number of figures: 3
- Maximum article length: 2,500 words (applies to the body of the manuscript only)

Case Report

- Submissions should provide informative original case reports of clinical impact. Case reports should make a contribution to medical knowledge and must have educational value or highlight the need for a change in clinical practice or diagnostic/prognostic approaches.
- The Abstract must include headings: Introduction; Case Presentation; Conclusions. 250 words maximum.
- The text should be divided into the following sections: Introduction, Case Presentation and Conclusions.
- The Case Presentation section should include a description of the patient’s relevant demographic details, medical history, symptoms and signs, treatment or intervention, outcomes and any other significant details.
- Conclusions should include an explanation of the case relevance and its importance to the field.
- **Ethics approval and consent to participate:** Manuscripts reporting studies involving human participants, human data or human tissue must:
 - Include a statement on ethics approval and consent (even where the need for approval was waived).
 - Include the name of the ethics committee that approved the study and the committee’s reference number if appropriate.
 - See below for more information on [Ethical Responsibilities of Authors](#), [Compliance with Ethical Standards](#) and [Research Involving Human Participants and/or Animals](#).
- **Consent for publication:** If your manuscript contains any individual person’s data in any form, consent to publish must be obtained from that person, or in the case of children, their parent or legal guardian. All presentations of case reports must have consent to publish. If your manuscript does not contain any personal data, please state “Not applicable” in this section.

SN CCM requires authors to follow the [CARE guidelines](#). The [CARE checklist](#) should be provided as a supplementary file. Submissions received without these elements will be returned to the authors as incomplete. The checklist is intended to assist authors in writing up their reports and to optimize the quality of reporting.

Commentary

Viewpoint

- Submissions for Viewpoints should raise an issue, provide a perspective, or make an argument about a topic relevant to clinical medicine.
- Maximum number of authors: 7
- Abstract: no headings required, 250 words maximum
- Maximum article length: 2,500 words (applies to the body of the manuscript only)

Letter to the editor

- Submissions should express views related to articles previously published in **SN Comprehensive Clinical Medicine** or present ideas/findings of scientific interest that do not constitute original research.

- Maximum number of authors: 4
- No abstract
- Maximum article length: 1,500 words
- Reference limit: 5; the first reference must be the publication in question.

Editorial

- Editorials are solicited by invitation only.
- Maximum number of authors: 3
- No abstract
- Maximum article length: 2,500 words (applies to the body of the manuscript only)

Ethical Matters

- Submissions should provide a balanced discussion of an ethical issue of clinical relevance.
- Maximum number of authors: 5
- Abstract: no headings required, 250 words maximum
- Maximum article length: 5,500 words (applies to the body of the manuscript only)

Review Article

- Review articles should address a focused topic, issue or question relevant to clinical medicine.
- Submissions should be balanced, comprehensive, and up-to-date.
- Submissions should not simply restate the literature but rather interpret and integrate the findings to provide a framework for understanding the literature on a particular topic.
- Maximum number of authors: 7
- Abstract: no headings required, 250 words maximum
- Maximum article length: 5,500 words (applies to the body of the manuscript only)

Criteria for Authorship

The criteria for authorship adopted by Neurocritical Care are set by the International Committee of Medical Journal Editors (<http://www.icmje.org/>). A discussion of role of authors and criteria for authorship can be found [here](#).

Authorship credit should be based only on 1) substantial contributions to conception and design, acquisition of data, or analysis and interpretation of data; 2) drafting the article or revising it critically for important intellectual content; and 3) final approval of the version to be published. Conditions 1, 2, and 3 must all be met.

Acquisition of funding, the collection of data, feedback on the manuscript, or general supervision of the research group, by themselves, do not justify authorship.

Disclosure of Potential Conflicts of Interest

Authors must disclose all relationships or interests that could influence or bias the work. Although an author may not feel there are conflicts, disclosure of relationships and interests affords a more transparent process, leading to an accurate and objective assessment of the work. Awareness of real or perceived conflicts of interests is a perspective to which the readers are entitled and is not meant to imply that a financial relationship with an organization that sponsored the research or compensation for consultancy work is inappropriate. Examples of potential conflicts of interests **that are directly or indirectly related to the research** may include but are not limited to the following:

- Research grants from funding agencies (please give the research funder and the grant number)
- Honoraria for speaking at symposia
- Financial support for attending symposia
- Financial support for educational programs
- Employment or consultation
- Support from a project sponsor
- Position on advisory board or board of directors or other type of management relationships
- Multiple affiliations
- Financial relationships, for example equity ownership or investment interest
- Intellectual property rights (e.g. patents, copyrights and royalties from such rights)
- Holdings of spouse and/or children that may have financial interest in the work

In addition, interests that go beyond financial interests and compensation (non-financial interests) that may be important to readers should be disclosed. These may include but are not limited to personal relationships or competing interests directly or indirectly tied to this research, or professional interests or personal beliefs that may influence your research.

The corresponding author collects the conflict of interest disclosure forms from all authors. (**Please note that each author should complete a disclosure form.**) Examples of forms can be found [here](#)

Please make sure to submit all Conflict of Interest disclosure forms together with the manuscript.

See below examples of disclosures:

Funding: This study was funded by X (grant number X).

Conflict of Interest: Author A has received research grants from Company A. Author B has received a speaker honorarium from Company X and owns stock in Company Y. Author C is a member of committee Z. If no conflict exists, the authors should state:

Conflict of Interest: Author A, Author B, and Author C declare that they have no conflict of interest.

Ethical Responsibilities of Authors

This journal is committed to upholding the integrity of the scientific record. As a member of the Committee on Publication Ethics (COPE) the journal will follow the COPE guidelines on how to deal with potential acts of misconduct.

Authors should refrain from misrepresenting research results which could damage the trust in the journal, the professionalism of scientific authorship, and ultimately the entire scientific endeavor. Maintaining integrity of the research and its presentation can be achieved by following the rules of good scientific practice, which include:

- The manuscript has not been submitted to more than one journal for simultaneous consideration.

- The manuscript has not been published previously (partly or in full), unless the new work concerns an expansion of previous work (please provide transparency on the re-use of material to avoid the hint of text-recycling (“self-plagiarism”).
- A single study is not split up into several parts to increase the quantity of submissions and submitted to various journals or to one journal over time (e.g. “salami-publishing”).
- No data have been fabricated or manipulated (including images) to support your conclusions
- No data, text, or theories by others are presented as if they were the author’s own (“plagiarism”). Proper acknowledgements to other works must be given (this includes material that is closely copied (near verbatim), summarized and/or paraphrased), quotation marks are used for verbatim copying of material, and permissions are secured for material that is copyrighted.

Important note: the journal may use software to screen for plagiarism.

- Consent to submit has been received explicitly from all co-authors, as well as from the responsible authorities - tacitly or explicitly - at the institute/organization where the work has been carried out, **before** the work is submitted.
- Authors whose names appear on the submission have contributed sufficiently to the scientific work and therefore share collective responsibility and accountability for the results.
- Authors are strongly advised to ensure the correct author group, corresponding author, and order of authors at submission. Changes of authorship or in the order of authors are **not** accepted **after** acceptance of a manuscript.
- Adding and/or deleting authors and/or changing the order of authors **at revision stage** may be justifiably warranted. A letter must accompany the revised manuscript to explain the reason for the change(s) and the contribution role(s) of the added and/or deleted author(s). Further documentation may be required to support your request.
- Requests for addition or removal of authors as a result of authorship disputes after acceptance are honored after formal notification by the institute or independent body and/or when there is agreement between all authors.
- Upon request authors should be prepared to send relevant documentation or data in order to verify the validity of the results. This could be in the form of raw data, samples, records, etc. Sensitive information in the form of confidential proprietary data is excluded.

If there is a suspicion of misconduct, the journal will carry out an investigation following the COPE guidelines. If, after investigation, the allegation seems to raise valid concerns, the accused author will be contacted and given an opportunity to address the issue. If misconduct has been established beyond reasonable doubt, this may result in the Editor-in-Chief’s implementation of the following measures, including, but not limited to:

- If the article is still under consideration, it may be rejected and returned to the author.
- If the article has already been published online, depending on the nature and severity of the infraction, either an erratum will be placed with the article or in severe cases complete retraction of the article will occur. The reason must be given in the published erratum or retraction note. Please note that retraction means that the paper is **maintained on the platform**, watermarked "retracted" and explanation for the retraction is provided in a note linked to the watermarked article.
- The author’s institution may be informed.

Compliance with Ethical Standards

To ensure objectivity and transparency in research and to ensure that accepted principles of ethical and professional conduct have been followed, authors should include information regarding sources of funding, potential conflicts of interest (financial or non-financial), informed consent if the research involved human participants, and a statement on welfare of animals if the research involved animals.

Authors should include the following statements (if applicable) in a separate section entitled “Compliance with Ethical Standards” when submitting a paper:

- Disclosure of potential conflicts of interest
- Research involving Human Participants and/or Animals
- Informed consent

Please note that standards could vary slightly per journal dependent on their peer review policies (i.e. single- or double-blind peer review) as well as per journal subject discipline. Before submitting your article check the instructions following this section carefully.

The corresponding author should be prepared to collect documentation of compliance with ethical standards and send if requested during peer review or after publication.

The Editors reserve the right to reject manuscripts that do not comply with the above-mentioned guidelines. The author will be held responsible for false statements or failure to fulfill the above-mentioned guidelines.

Research Involving Human Participants and/or Animals

Statement of human rights

When reporting studies that involve human participants, authors should include a statement that the studies have been approved by the appropriate institutional and/or national research ethics committee and have been performed in accordance with the ethical standards as laid down in the 1964 Declaration of Helsinki and its later amendments or comparable ethical standards.

If doubt exists whether the research was conducted in accordance with the 1964 Helsinki Declaration or comparable standards, the authors must explain the reasons for their approach, and demonstrate that the independent ethics committee or institutional review board explicitly approved the doubtful aspects of the study.

The following statements should be included in the text before the References section:

Ethical approval: “All procedures performed in studies involving human participants were in accordance with the ethical standards of the institutional and/or national research committee and with the 1964 Helsinki declaration and its later amendments or comparable ethical standards.”

Ethical approval retrospective studies

Although retrospective studies are conducted on already available data or biological material (for which formal consent may not be needed or is difficult to obtain) ethical approval may be required dependent on the law and the national ethical guidelines of a country. Authors should check with their institution to make sure they are complying with the specific requirements of their country.

Statement on the welfare of animals

The welfare of animals used for research must be respected. When reporting experiments on animals, authors should indicate whether the international, national, and/or institutional guidelines for the care and use of animals have been followed, and that the studies have been approved by a research ethics

committee at the institution or practice at which the studies were conducted (where such a committee exists).

For studies with animals, the following statement should be included in the text before the References section:

Ethical approval: “All applicable international, national, and/or institutional guidelines for the care and use of animals were followed.”

If applicable (where such a committee exists): “All procedures performed in studies involving animals were in accordance with the ethical standards of the institution or practice at which the studies were conducted.”

If articles do not contain studies with human participants or animals by any of the authors, please select one of the following statements:

“This article does not contain any studies with human participants performed by any of the authors.”

“This article does not contain any studies with animals performed by any of the authors.”

“This article does not contain any studies with human participants or animals performed by any of the authors.”

Informed consent

All individuals have individual rights that are not to be infringed. Individual participants in studies have, for example, the right to decide what happens to the (identifiable) personal data gathered, to what they have said during a study or an interview, as well as to any photograph that was taken. Hence it is important that all participants gave their informed consent in writing prior to inclusion in the study. Identifying details (names, dates of birth, identity numbers and other information) of the participants that were studied should not be published in written descriptions, photographs, and genetic profiles unless the information is essential for scientific purposes and the participant (or parent or guardian if the participant is incapable) gave written informed consent for publication. Complete anonymity is difficult to achieve in some cases, and informed consent should be obtained if there is any doubt. For example, masking the eye region in photographs of participants is inadequate protection of anonymity. If identifying characteristics are altered to protect anonymity, such as in genetic profiles, authors should provide assurance that alterations do not distort scientific meaning.

The following statement should be included:

Informed consent: “Informed consent was obtained from all individual participants included in the study.”

If identifying information about participants is available in the article, the following statement should be included:

“Additional informed consent was obtained from all individual participants for whom identifying information is included in this article.

After Acceptance

Upon acceptance of your article you will receive a link to the special Author Query Application at Springer's web page where you can sign the Copyright Transfer Statement online and indicate whether you wish to order OpenChoice and offprints.

Once the Author Query Application has been completed, your article will be processed, and you will receive the proofs.

Copyright transfer

Authors will be asked to transfer copyright of the article to the Publisher (or grant the Publisher exclusive publication and dissemination rights). This will ensure the widest possible protection and dissemination of information under copyright laws.

Offprints

Offprints can be ordered by the corresponding author.

Color illustrations

Publication of color illustrations is free of charge.

Proof reading

The purpose of the proof is to check for typesetting or conversion errors and the completeness and accuracy of the text, tables and figures. Substantial changes in content, e.g., new results, corrected values, title and authorship, are not allowed without the approval of the Editor.

After online publication, further changes can only be made in the form of an Erratum, which will be hyperlinked to the article.

Online First

The article will be published online after receipt of the corrected proofs. This is the official first publication citable with the DOI. After release of the printed version, the paper can also be cited by issue and page numbers.

Open Choice

Open Choice allows you to publish open access in more than 1850 Springer Nature journals, making your research more visible and accessible immediately on publication.

Article processing charges (APCs) vary by journal - [view the full list](#)

Benefits:

- Increased researcher engagement: Open Choice enables access by anyone with an internet connection, immediately on publication.
- Higher visibility and impact: In Springer hybrid journals, OA articles are accessed 4 times more often on average and cited 1.7 more times on average*.
- Easy compliance with funder and institutional mandates: Many funders require open access publishing, and some take compliance into account when assessing future grant applications.
- It is easy to find funding to support open access – please see our funding and support pages for more information.

(*) Within the first three years of publication. Springer Nature hybrid journal OA impact analysis, 2018.

- [Open Choice](#)
- [Funding and Support pages](#)

Copyright and license term – CC BY

Open Choice articles do not require transfer of copyright as the copyright remains with the author. In opting for open access, the author(s) agree to publish the article under the Creative Commons Attribution License.

- [Find more about the license agreement](#)

English Language Editing

For editors and reviewers to accurately assess the work presented in your manuscript you need to ensure the English language is of sufficient quality to be understood. If you need help with writing in English, you should consider:

- Asking a colleague who is a native English speaker to review your manuscript for clarity.
- Visiting the English language tutorial which covers the common mistakes when writing in English.
- Using a professional language editing service where editors will improve the English to ensure that your meaning is clear and identify problems that require your review.

Use of an editing service is neither a requirement nor a guarantee of acceptance for publication. Two available options are [SpringerNature Author Services](#) and [American Journal Experts](#).

Please contact an editing service directly to make arrangements for editing and payment.

For Authors from China

文章在投稿前进行专业的语言润色将对作者的投稿进程有所帮助。作者可自愿选择使用 Springer 推荐的编辑服务，使用与否并不作为判断文章是否被录用的依据。提高文章的语言质量将有助于审稿人理解文章的内容，通过对学术内容的判断来决定文章的取舍，而不会因为语言问题导致直接退稿。作者需自行联系 Springer 推荐的编辑服务公司，协商编辑事宜。

- 理文编辑

For Authors from Japan

ジャーナルに論文を投稿する前に、ネイティブ・スピーカーによる英文校閲を希望されている方は、Edanz社をご紹介します。サービス内容、料金および申込方法など、日本語による詳しく説明はエダンググループジャパン株式会社の下記サイトをご覧ください

- エダンググループジャパン

For Authors from Korea

영어 논문 투고에 앞서 원어민에게 영문 교정을 받고자 하시는 분들께 Edanz 회사를 소개해 드립니다. 서비스 내용, 가격 및 신청 방법 등에 대한 자세한 사항은 저희 Edanz Editing Global 웹사이트를 조해 주시면 감사하겠습니다.

- Edanz Editing Global.



<http://www.springer.com/journal/42399>

SN Comprehensive Clinical Medicine

Editors-in-Chief: Mahmoudi, M.; Martelletti, P.

ISSN: 2523-8973 (electronic version)

Journal no. 42399



<http://www.springer.com/journal/42399>

SN Comprehensive Clinical Medicine

Editors-in-Chief: Mahmoudi, M.; Martelletti, P.

ISSN: 2523-8973 (electronic version)

Journal no. 42399